

**Response Time: 2 hours
Job Length: 8 weeks
Size of Damage: \$180,000**

Burst Fire Sprinkler Head

Frozen Sprinkler Head Burst and Flooded
Resch Science & Technology Hall



The affected property is a science building with multiple classroom and administration offices on the campus of Graceland University in Lamoni, IA. A fire sprinkler head had frozen and burst, sending water throughout the 12,000 sq. foot area. Water damage mitigation began two hours after the call came in. Drying time was approximately three days, followed by removal of drywall and insulation, then reconstruction.



Rapid Response & Mobilization

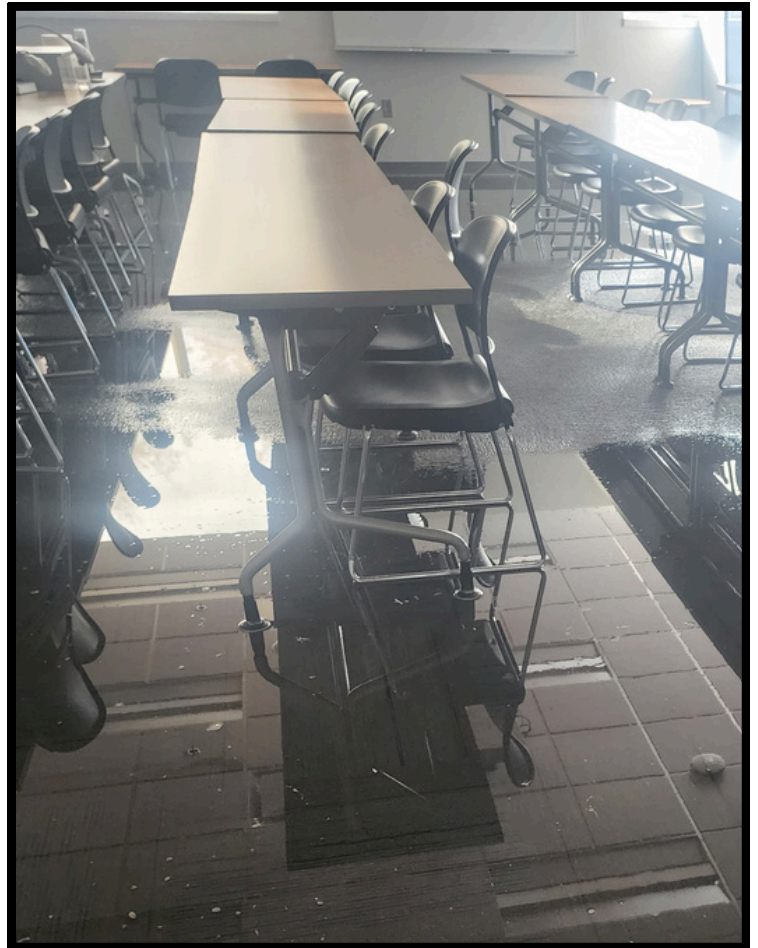
Within two hours of the initial call, Rainbow Restoration deployed eight team members to the site, with an additional seven personnel arriving by midday. The team included technicians, laborers, estimators, and project managers, ensuring a coordinated and comprehensive response from the outset.

Mitigation & Drying Process

Immediate water extraction efforts were initiated to prevent further structural damage. Using high-capacity portable extractors and two truck-mounted units, the team removed water across approximately 12,180 square feet. Impacted areas included:

- Ten classrooms
- Main hallway, entryway, and lobby
- Conference room
- Ten instructor offices

Following extraction, contents were carefully managed to support efficient drying. Classroom materials were packed and secured, and office furniture was relocated. Flood cuts were performed as needed to promote airflow and accelerate moisture removal.





Restoration & Reconstruction

Once the structure was fully dried, Rainbow Restoration completed all necessary reconstruction work, including installation of new insulation, drywall hanging and finishing, and Interior painting across all affected areas.

Outcome

Through a highly coordinated and efficient response, **classes resumed just eight days after the initial loss**—significantly reducing downtime for the university. Rainbow Restoration continued to support long-term recovery by scheduling the replacement of flooring, baseboards, and ceiling tiles during off-hours, ensuring minimal disruption to ongoing operations.



From Aaron Cox, Facility Director for Graceland University:

"I wanted to thank you and your team for the work you've done here at Graceland University recently. The situations we've required after hour responses; you've delivered with very timely arrivals and with an adequate crew and equipment to take care of the job at hand. The communication from your team for coordination and execution throughout the restoration process has been excellent. You worked around our demanding schedule to produce as little disruption as possible to our operations. Your efforts are appreciated and I'm happy to have you as a resource."